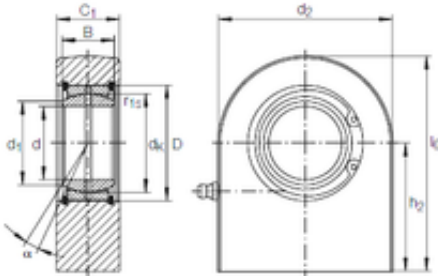




CT?BEARING-SINGAPORE LTD.

25 mm x 42 mm x 20 mm INA GF 25 DO plain bearings



GF 25 DO Bearing 2D drawings and 3D CAD models

Bearing No. GF 25 DO

Size	25x42x20 mm
Bore Diameter	25 mm
Outer Diameter	42 mm
Width	20 mm
d	25 mm
D	42 mm
B	20 mm
d1	29,3 mm
d2	55 mm
dk	35,5 mm
h2	45 mm
l6 max.	72,5 mm
r1 min.	0,6 mm
C1	23 mm
C1 max	24 mm
Angle	7 °
Weight	0,53 Kg
Basic dynamic load rating (C)	48 kN